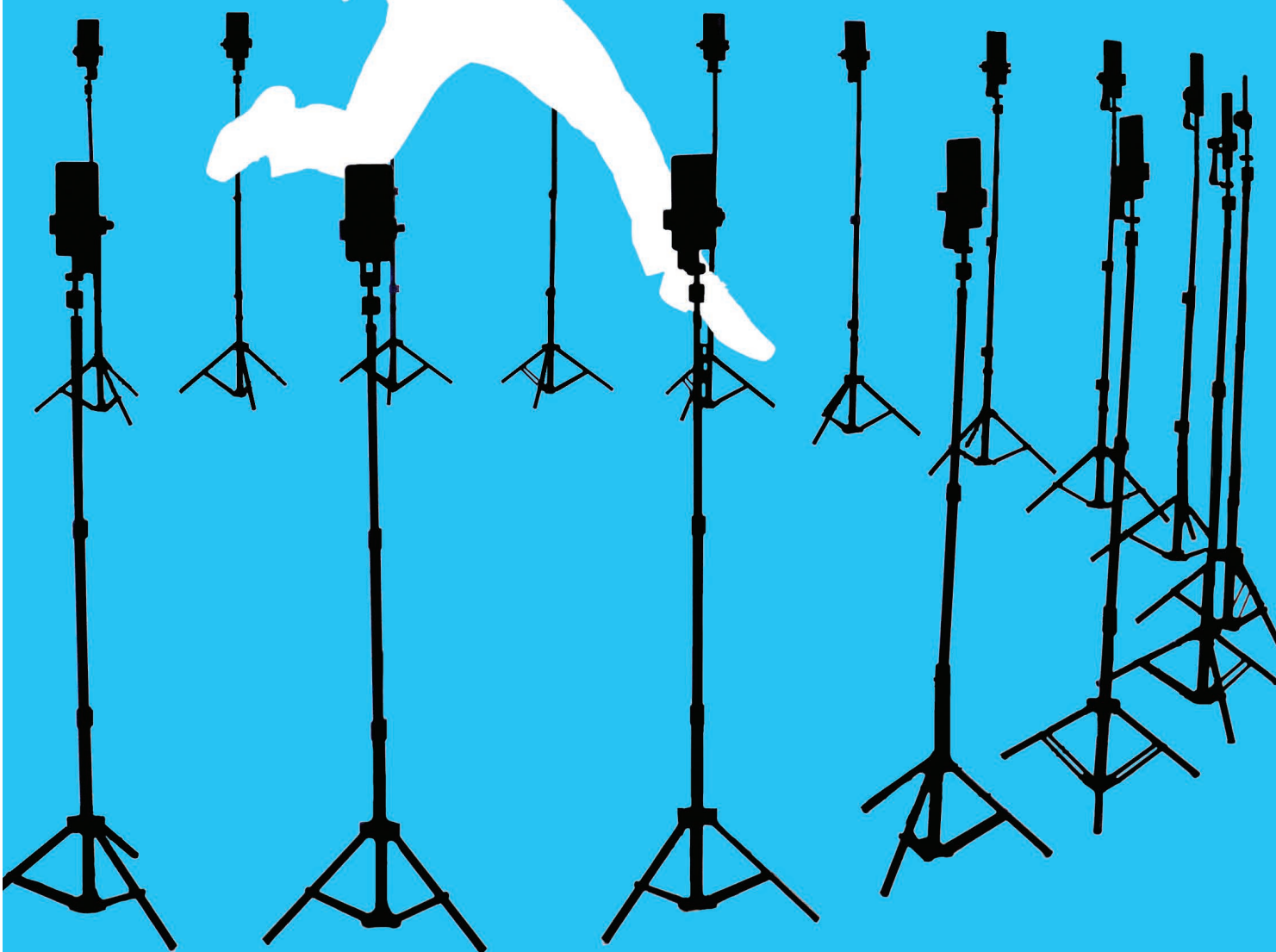




SPINSHOT³⁶⁰

360° PHOTO BOOTH

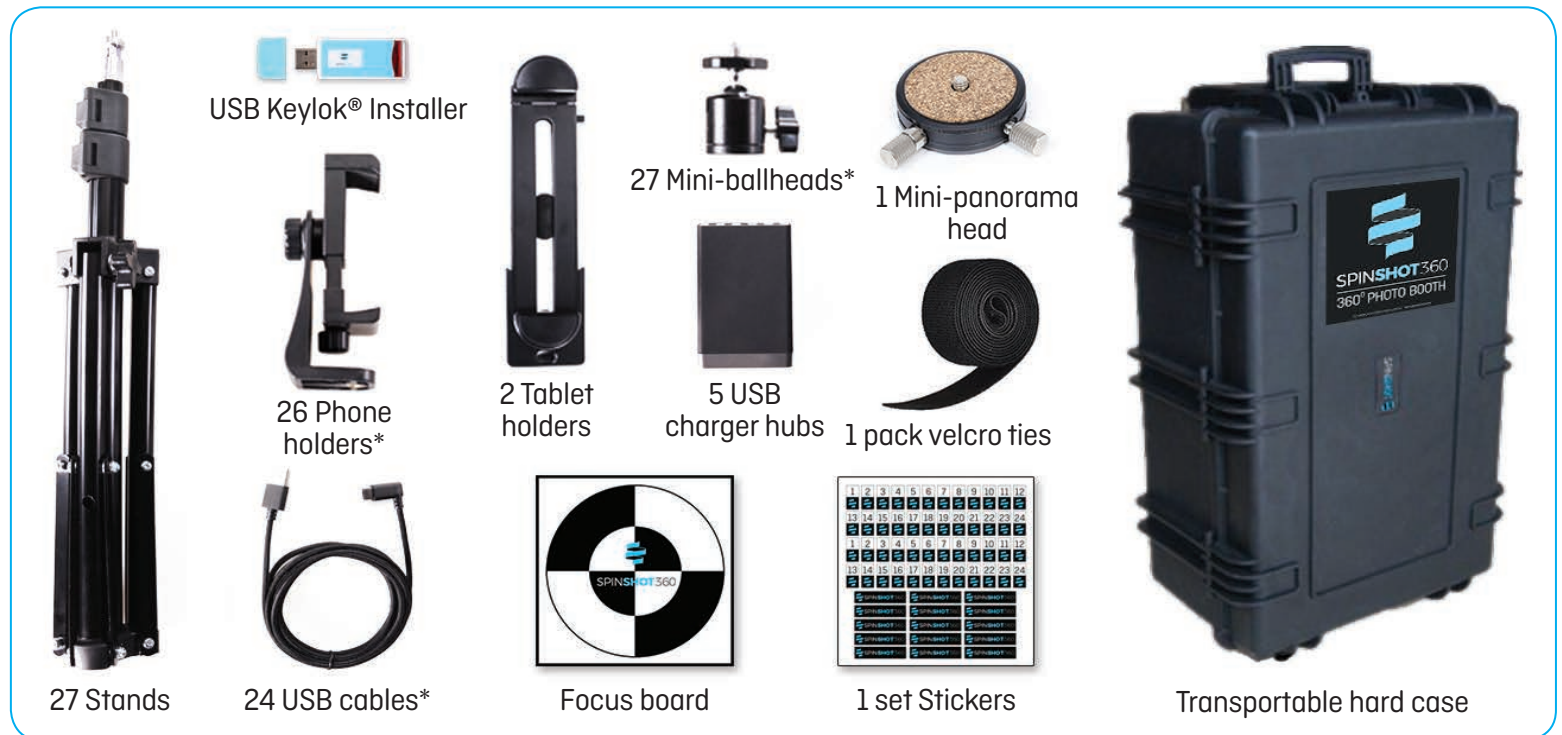
USER MANUAL



Let's get started!

You, your guests, and SPINSHOT360, are going to have a lot of fun together!

Before we start setting up, let's do a quick check of the contents of your [SPINSHOT360 KIT](#):



*with spares

The next pages should guide you in the setup and installation process of SPINSHOT360.

For technical support and at anytime you may have questions, you may reach us at this email address support@spinshot360.com or message us via the [live chat](#) in our website, www.spinshot360.com from 9am to 6pm PHT (UTC+8).

Thanks and have fun!

The SPINSHOT360 Team
Futureworks International Limited

“Patience is a **virtue!**”

This is an overview of the setup process to give you an idea of what you will be doing. The entire initial setup will take you approximately three and a half hours if you have all your materials ready.

- 1 Camera Stands Setup (pages 3 - 7)
- 2 Dedicated SPINSHOT360 Network Setup (pages 8 - 9)
- 3 Software Installation (page 10)
- 4 Using SPINSHOT360 Apps (pages 11 - 20)

THINGS TO PREPARE:

One (1) Computer Desktop or Laptop:

Minimum requirements:
Microsoft Windows 10 Home
i5 5th generation
8GB RAM, 128GB HDD storage space
Screen Resolution 1366 x 768
Dual-band WIFI connectivity
LAN port
USB ports
HDMI output port

15 or 24 Android Phones

24 units Android Phones for 360-degree setup or
15 units for 180-degree setup
(Android version 5.0 Lollipop or newer)

Note: Do not install SIM cards

*Supported models :

Nexus 5X
Nexus 6P
Samsung Galaxy S7 (micro-USB cables not included in the SPINSHOT360 Kit)
Samsung Galaxy A5 (2017)

Note: Please check our website periodically for updated list of phone models supported.

Two (2) Tablets:

Apple iPad 2 or higher (iOS 9 or newer) or
Android tablets (5.0 Lollipop or newer, 1920 x 1200 minimum resolution)

One (1) Dual-band WIFI Router

Dual-band WIFI router with LAN cable

One (1) Pocket WIFI

For wireless internet connection for sending videos online when in a venue with no available WIFI

One (1) HD TV Screen or PC Monitor

With a resolution of 1920 x 1080
For vertical installation format, you may use bracket and stand if available

Four (4) LED Video Lights

Any professional video lighting system
4 units for 360° or 3 units for 180°; minimum 600W per unit

Other Setup Materials

Chalk or masking tape for marking
Measuring tape
String 6-ft. long
3 units Universal power strips with 5 outlets (SPINSHOT360 USB chargers have US standard plugs)

“Two heads are better than one!”

STEP 1 CAMERA STANDS SETUP

1 MANPOWER

You will need a another person to help you setup. Make sure that you also have your [measuring tape](#), [chalk](#) and [masking tape](#) on hand.

IMPORTANT:

IF YOU ARE NOT FAMILIAR WITH NETWORK AND SOFTWARE INSTALLATION, IT WILL HELP TO HAVE SOMEONE WHO CAN ASSIST YOU. IF THIS IS YOUR FIRST TIME TO SETUP SPINSHOT360, WE RECOMMEND TO FOLLOW THIS MANUAL TO THE LETTER.

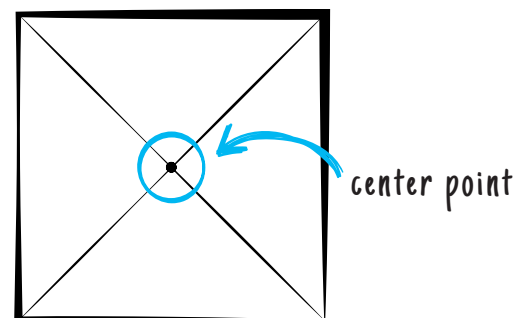
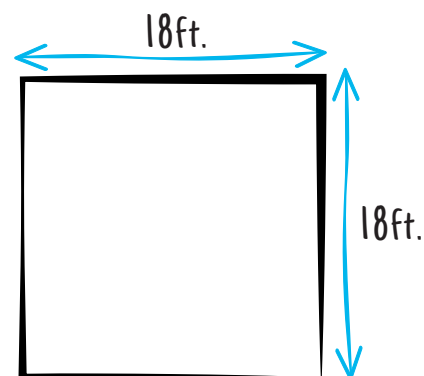
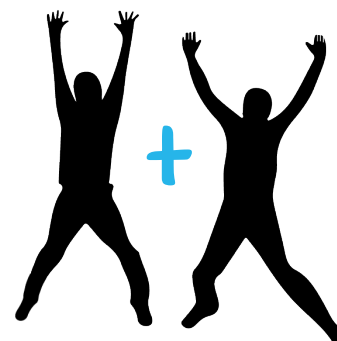
2 SPACE

Find a space with flat and stable flooring and has an area of 18ft x 18ft. Mark the corners of the area with masking tape.

Note: The 18ft x 18ft area is just a suggestion based on our experience. Actual area size can vary depending on your event's requirement.

3 CENTER POINT

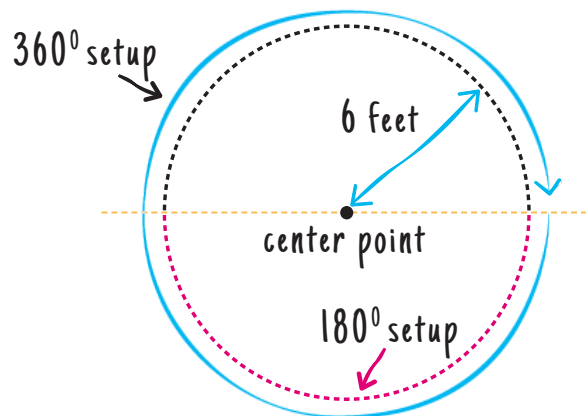
Using the chalk, draw diagonal lines from one corner to the opposite corner, forming an X. Mark the point where the diagonal lines intersect. That is your [center point](#).



4 180°/360° MARKER

Take out your **string** and hold one end of it at the center point while your partner holds the other end. Draw a circle with the **chalk** while holding the other end of the string.

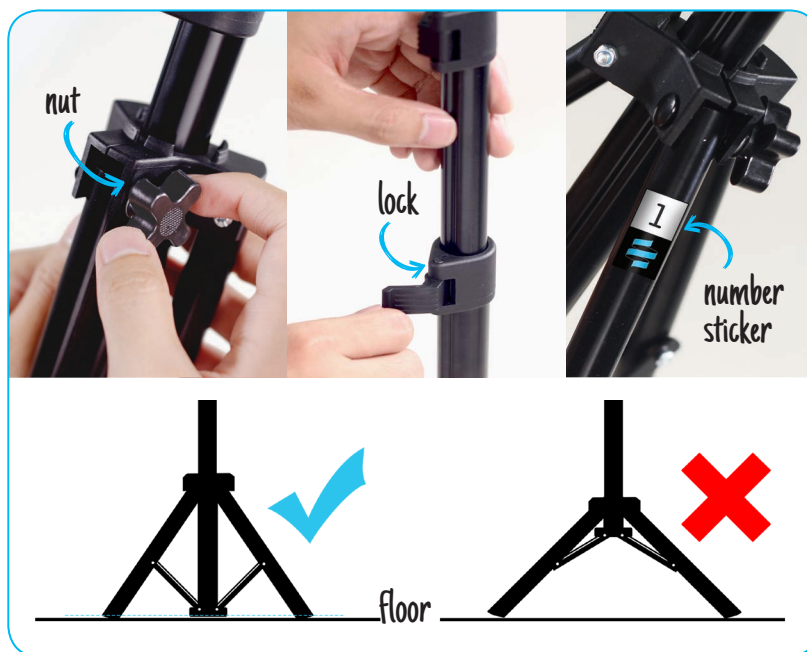
Note: Like step #2, the circle diameter can vary depending on your configuration.



5 STANDS

Get the **24 stands**. Loosen the nut and spread the legs. Lock the nut. Follow diagram for best result.

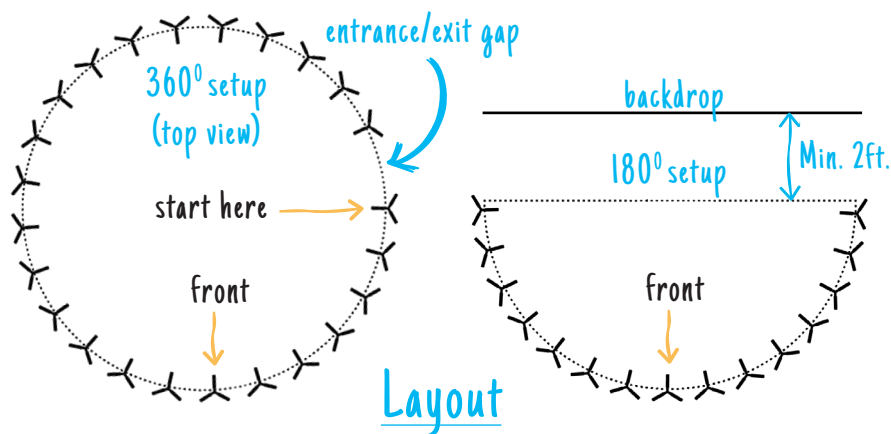
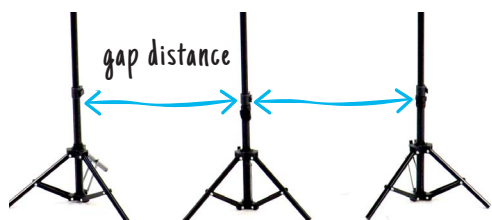
Extend the post to their maximum height and lock. Label the stand by sticking a number on one leg [stickers provided].



6 LAYOUT & GAP MEASUREMENTS

Place stands along the circle. Start on the right side then clockwise. Follow the **layout and gap measurements**. This will automatically give you an **entrance/exit gap** for your guests.

	diameter	gap distance
360°	12 ft	→ 18 ½ inches / 55.5cm
24 Phones	14 ft	→ 21 ¾ inches / 47.2cm
180°	12 ft	→ 15 ½ inches / 39.4cm
15 Phones	14 ft	→ 17 inches / 43.2cm



7 PHONE HOLDERS

Get the [phone holders](#) and [mini-ballheads](#). Attach a mini-ballhead to the bottom of each phone holder. Make sure it is sturdy but do not over-tighten.

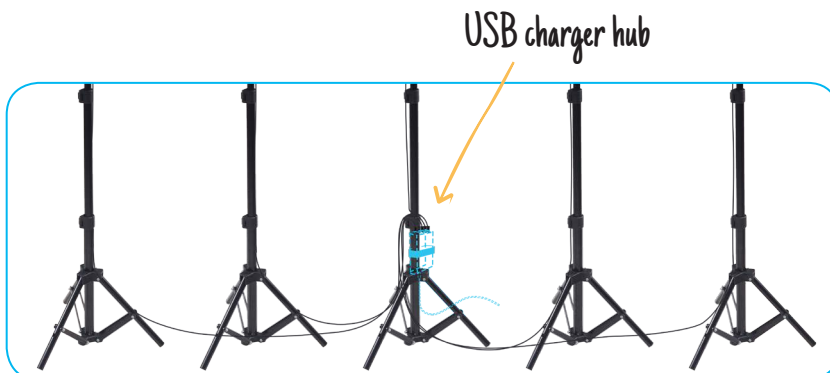
Screw the phone holders to the stand. Tighten to make it sturdy. Adjust the mini-ballhead nut to make the phone holders upright. The phone clip should be in horizontal position. To do this, loosen the knob at the back of the phone holder and rotate phone clip.

DO NOT ATTACH THE ANDROID PHONES YET!



8 POWER SUPPLY

Get the [USB charger hubs](#). Each USB charger hub can power up to 5 Android phones. Attach one USB charger hub to a stand using the velcro ties provided. Put a USB charger hub for every 5 stands. See illustration. Once done, plug the USB charger hubs into the power strips. Make sure the power strips are connected to a power source.



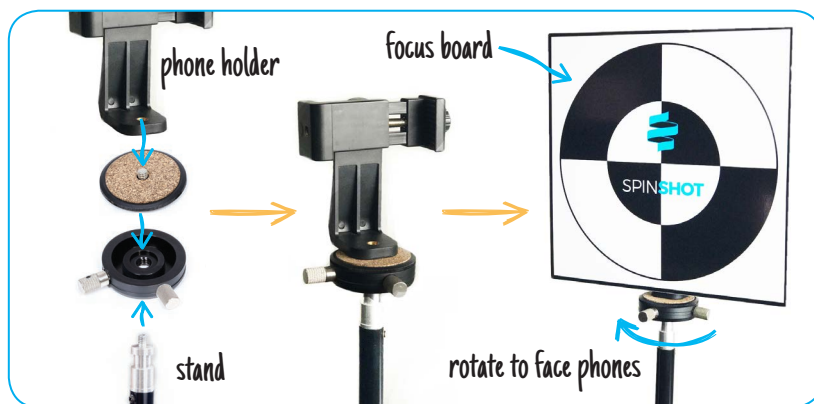
9 CABLING

Get a **USB cable**. The right-angled **USB Type C** connector should be placed by the phone holder. The **USB Type A** connector on the other end should be connected to the nearest **USB charging hub**. Secure the cable with **velcro cable ties**. Tie the loose parts of the cables together to make them tidy. Repeat the process for each stand.



10 FOCUS BOARD

Assemble the **focus board** by placing the **phone holder** and **mini-panorama head** on a stand. Attach the focus board to the phone holder. Place the whole stand on the area's center point and leave it there for now. See layout diagram on page 7.



11 TABLET HOLDERS

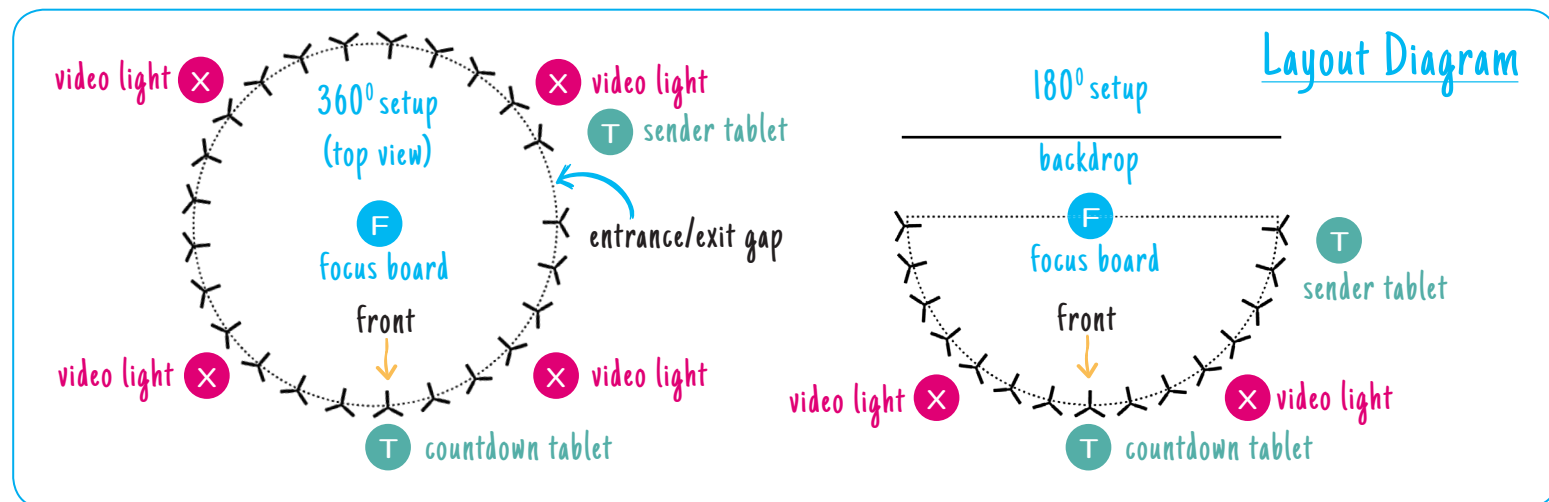
Get **two stands**, **two tablet holders**, and **two mini-ballheads**. Assemble tablet holder and mini-ballhead then attach to a stand.

Place each set to their designated places in the setup. See layout diagram on page 7.



12 VIDEO LIGHTS

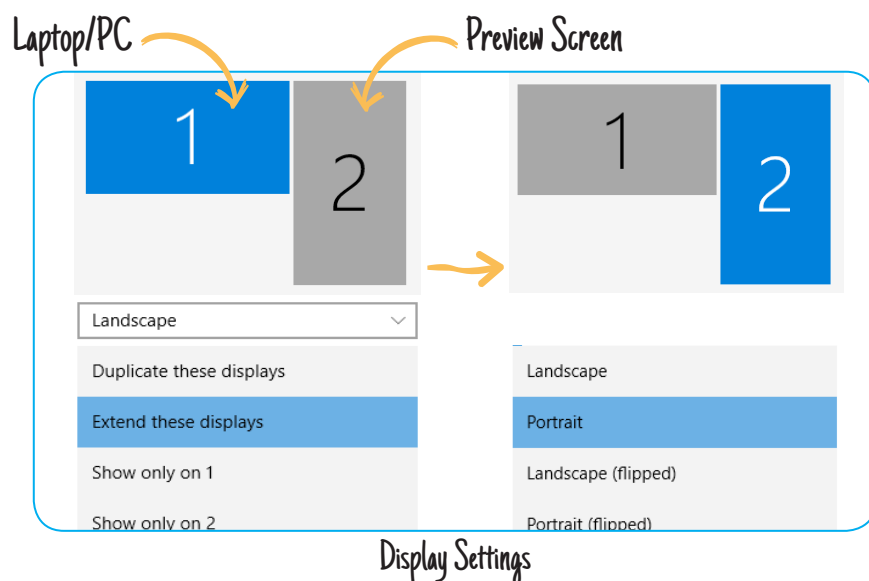
Set up your **LED video lights**. 3 to 4 powerful LED video lights should be enough for SPINSHOT360. Distribute the lights outside the circle of stands and the beam should face towards the center point. Refer to your video light's user manual for set up instructions. See layout diagram below.



13 PREVIEW SCREEN

Place the HD TV/Monitor near the Windows PC. Connect them via HDMI for viewing SPINSHOT360 video output later.

Turn ON your Windows PC. In the display settings of your PC, set it to **"Extend these displays"**. Click **"apply"**. Afterwards, select **display #2** and change the orientation to **"Portrait"** or **"Portrait flipped"** depending on how the TV is installed. Make sure it is upright. Click **"apply"** again.



Now you're ready to set up the dedicated SPINSHOT network.
Proceed to next page.

“No man is an island”

STEP 2 SETTING UP THE DEDICATED SPINSHOT NETWORK

REMINDER: IF YOU ARE NOT FAMILIAR WITH NETWORK INSTALLATION, IT WILL HELP TO HAVE SOMEONE WHO CAN ASSIST YOU.

1 Prepare the following equipment:



Laptop or Computer



Dual-band WIFI Router



Standard LAN cable



Pocket WIFI with internet connection, or any other internet connection

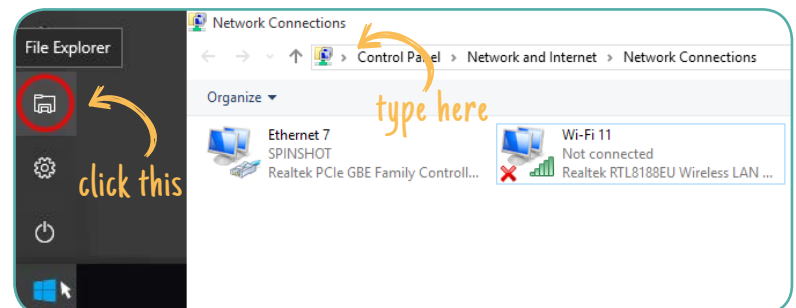
2 Turn ON your PC and connect the Dual-band WIFI router using the LAN cable.

3 Set your Dual-band WIFI router. It **SHOULD NOT BE CONNECTED** to the internet but you will change some settings to work with SPINSHOT360. Follow your WIFI router's user manual to configure **wireless settings**. Get help if needed.

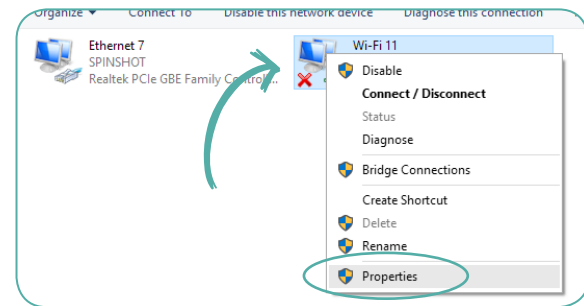
In your WIFI router's **wireless settings**, find the WIFI network name (SSID) for the 5Ghz frequency and **rename it to "SPINSHOT"**. Now, set a new **WIFI password** that you will remember. If possible, **disable** the 2.4Ghz frequency option as well. Save and exit wireless settings. Close window.

4 Next, configure your PC to connect to **another WIFI** with internet (a Pocket WIFI or another WIFI internet source). You will set your PC to use this WIFI internet connection to send SPINSHOT360 videos to emails, while at the same time connected to the **SPINSHOT** network via LAN. This sounds tricky, but it can be done through a neat trick:

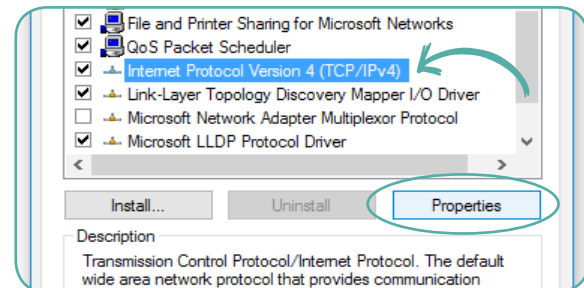
a In your PC, open a "file explorer" window, then type "**network connections**" on the address bar to open it.



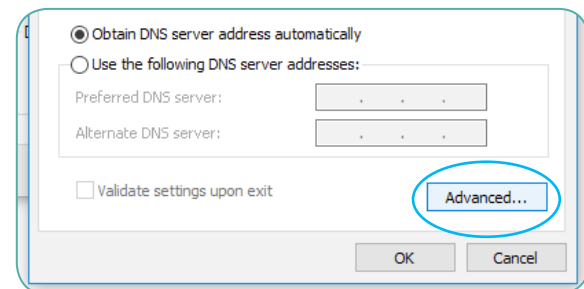
- b Right-click on the available WIFI adapter (not the SPINSHOT router connection) and select “Properties”.



- c Click on “Internet Protocol Version 4” and go to its Properties.

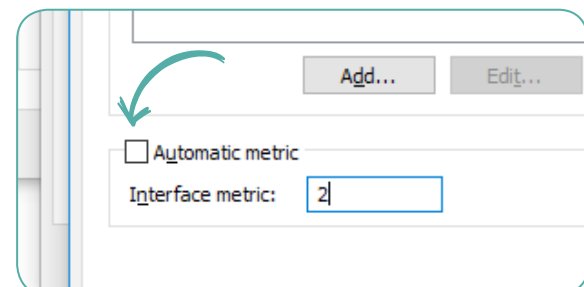


- d Click on “Advanced”.



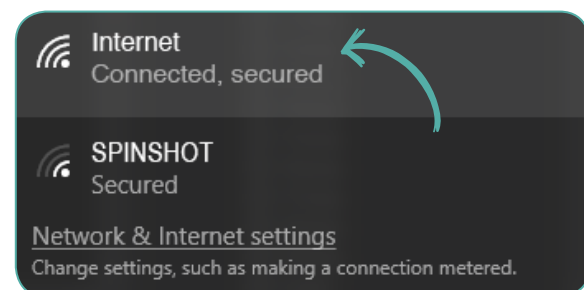
- e At the bottom you will see the “Automatic metric”. **UNCHECK** the box. In the field “Interface metric”, enter “2”. Click “OK”. Then click “OK” again. Close the Network Connection window.

The PC will now use the WIFI internet to send SPINSHOT360 videos while it uses the SPINSHOT network to communicate with the Android phones.



- f In the notifications area (lower-right of desktop), connect to an available WIFI internet. Make sure NOT to connect to “SPINSHOT”.

You're now ready for the next steps.



“Great things come in small **packages.**”

STEP 3 SPINSHOT360 SOFTWARE INSTALLATION

You are now ready to set up your SPINSHOT360 software and hardware. Take out the **USB Keylok® installer** from the SPINSHOT360 cylinder pack. Turn ON your computer and plug-in the USB Keylok® Installer to the PC. Look for the **SPINSHOT360** drive, double-click file **“SPINSHOT360 Installer”**. It will guide you through the following:

- 1 Installing the SPINSHOT360 Camera app on all Android phones
- 2 Installing the SPINSHOT360 Sender and Countdown apps on the tablets
- 3 Installing the SPINSHOT360 App on the Windows PC
- 4 Using SPINSHOT360 for the first time

Enjoy!

The SPINSHOT360 Team

“The fun part begins

now.”

USING THE SPINSHOT360 PC APP

1 CHOOSE LICENSE MODE

Enter your **SINGLE-USE** Key or **PERMANENT** Key to the appropriate box to use SPINSHOT360. You may also close the module to proceed using SPINSHOT360 in **TEST MODE** but it will produce watermarked videos. While in TEST MODE, you may click GO LIVE to enter license keys any time.

2 CHOOSE EVENT

Select **NEW** event or open recent events in the events project list. Clicking **NEW** will let you set the event name and date. After that, it goes straight to the settings so you can tweak the settings for that event. Opening recent or past events will lead you straight to the main screen.

3 SETTINGS

A PROJECT SETTINGS

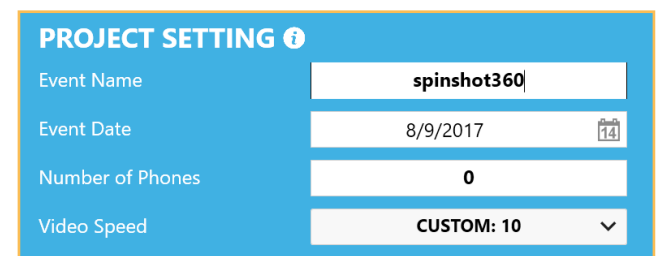
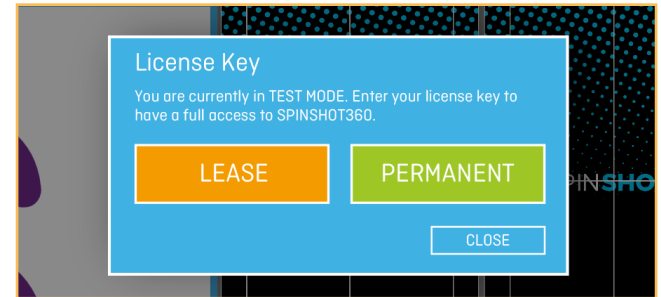
EVENT NAME – This is the name of your event

EVENT DATE – This is the date of your event

NUMBER OF PHONES – Indicate number of phones in your setup.

**NOTE: Maximum of 48 phones are supported. If you use 32 phones or less, you only need one (1) WIFI router but when you want to use more than 32 phones, you will need two (2) WIFI routers bridged together to make it work reliably.*

VIDEO SPEED – This sets the speed of the video speed playback. You can choose **SLOW**, **NORMAL**, or **FAST**. The default is setting is **NORMAL**, and is recommended.



B EMAIL SETTING - *Note: If you have never done this before, ask your network administrator for assistance.*

OUTGOING MAIL SERVER – This is your outgoing mail server

PORT – This is the port value of the outgoing mail server

USERNAME – This is the username of the mail account to be used for sending

PASSWORD – This is the password of the mail account to be used for sending.

CC EMAIL ADDRESS – We list the email address/es where copies of the output videos will be sent. Multiple email addresses should be separated by a semi-colon (;) or a comma (,) or a space.

EMAIL SENDER SETTING ⓘ	
Outgoing mail server	Eg. 'smtp.gmail.com'
Port	0
Username	Eg. 'example@gmail.com'
Password	
CC Email Address (Optional)	

(Use "semicolon, comma or space" for multiple emails)

C CAMERA SETTING

CAMERA SETTING ⓘ				
NORMAL	ACTIVE	LOW-LIGHT	CUSTOM	
				White Balance: NORMAL
				ISO: 400
				Shutter Speed: 1/480

NORMAL – This is the recommended camera setting for a standard setup

ACTIVE – This preset captures quick movements better but requires more lights.

LOW LIGHT – This preset is ideal when there is not enough light.

CUSTOM – Select this if you want to customize the following settings.

- 1 WHITE BALANCE** – Correct the camera image’s color depending on the lighting condition in the venue so that the image output looks natural. Default is **NORMAL**.
 - NORMAL** – Applies to most setups
 - COOL** – Applies to venues with “cool” lighting (like fluorescent lighting)
 - WARM** – Applies to venues with “warm” lighting (like incandescent or tungsten lighting)
- 2 ISO** – Lower values result in darker but sharper images, while higher values result in lighter images that have more noise or grain. The default value is **400**.
- 3 SHUTTER SPEED** – This sets the camera exposure time. Higher values are good for capturing motion and minimize motion blur but will require more light as the image tends to be darker. Lower values will require less light but the image is prone to motion blur. Balance the values for good results. The default value is **1/480**.

D SAVE & CLOSE - Click to save all changes you made in the settings the click Close to exit to main screen

E LAYOUT EDITOR - Lets you customize the look of you SPINSHOT360

1 **PREVIEW SCREEN** – Customize your Preview Screen.

DEFAULT BACKGROUND – Change the preview screen color.

CUSTOM BACKGROUND – Add wallpaper for preview screen. The maximum size is 1920 X 1080 pixels. Only PNG Files are supported.

TEXT – Add a text.

2 **VIDEO OUTPUT** – Customize your Video Output

OVERLAY IMAGE – Add border image. Size should be 1920 X 1080 pixels. Only PNG files are supported.

LOGO – Add your logo then drag it to the position you want. Only PNG Files are supported.

CUSTOM BORDER – Add border color and thickness.

TEXT – Add a text.

MOVING IMAGE - Add animated image overlay. Supports .PNG image sequence only.

3 **SENDER TABLET** – Customize your Sender Tablet

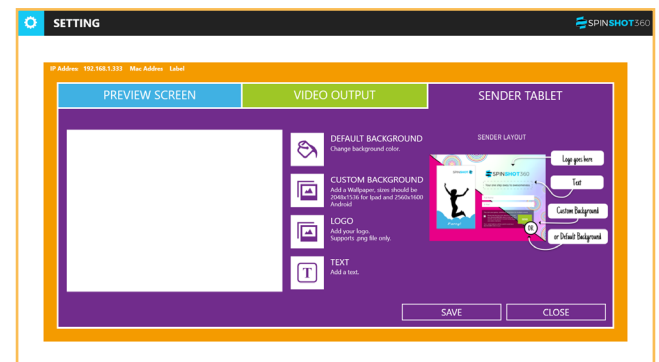
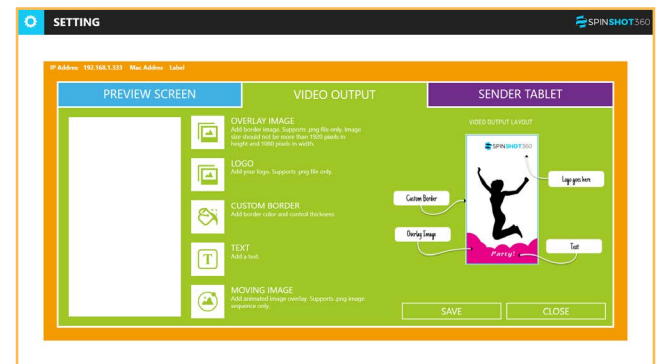
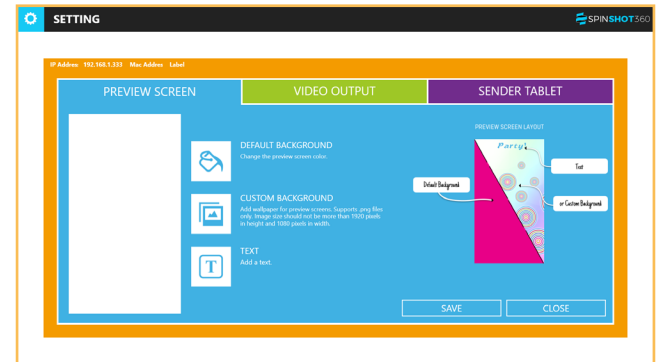
DEFAULT BACKGROUND – Change background color.

CUSTOM BACKGROUND – Add wallpaper. Size should be 2048 X 1536 for iPad or 2560 X 1600 for Android Tablet.

LOGO – Add you logo. Supports .PNG file only.

TEXT – Add a text.

4 **SAVE & CLOSE** – Click Save to set the changes you made then click Close to exit.



F SHARING & PRINTING - Lets you set sharing and printing options.

1 **SHARING** – Set sharing options.

VIDEO HOST SHARING – Lets you set hosting and viewing URL where the video results will be stored and viewed by your guests. The viewing URL will be linked to the QR code generated on each print output

FACEBOOK SHARING – Lets you set automatic sharing to a Facebook page you manage. Facebook page admin or editor login is required.

2 **PRINTING** – Customize printing format. Choose your preferred layout.

DEFAULT BACKGROUND – Change background color.

CUSTOM BACKGROUND – Add a wallpaper. Size should be 6 X 4 inches or 15 X 10 cm. Supports .PNG only.

TEXT – Add a text.

LOGO – Add your logo. Supports .PNG only.

3 **SAVE & CLOSE** – Click Save to set the changes you made then click Close to exit.

G ADVANCED SETTING

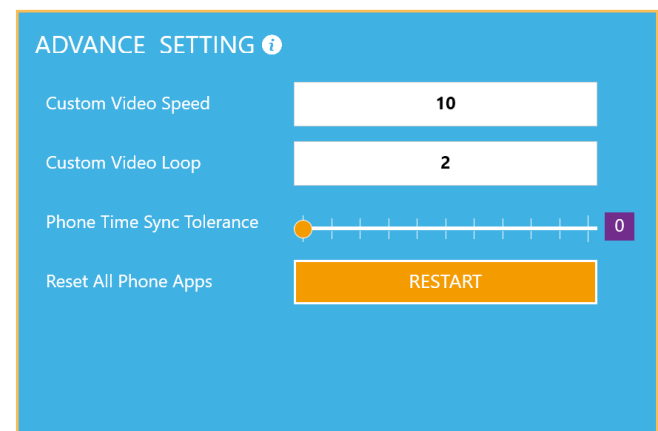
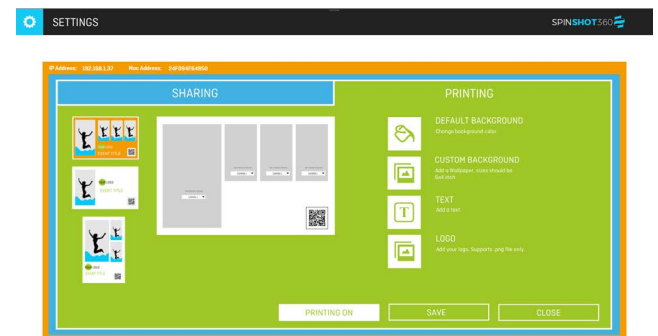
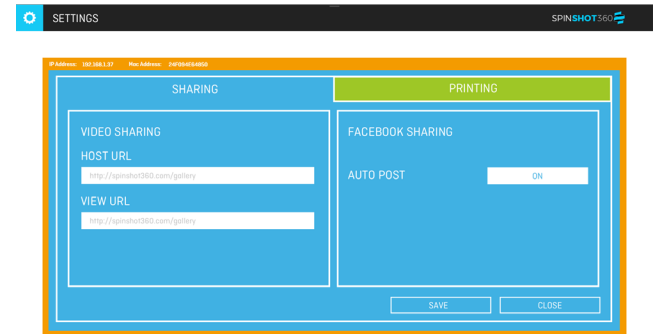
CUSTOM VIDEO SPEED – Set desired frame rate or playback speed (in frames/second)

CUSTOM VIDEO LOOP – Set the number of video loops.

VIDEO BOUNCE – Set loop option to bounce.

EMAIL VIDEO OUTPUT – Set quality of video output for email sender (in M/bps).

HIGH RESOLUTION VIDEO – Lets you enable high-quality, high-resolution video output for special purposes (in M/bps).



COUNTDOWN TRIGGER MODE – Lets you set Auto or Manual capture. **AUTO** will automatically capture a shot after the countdown. **MANUAL** will let you manually capture a shot.

SHOW PHONE TIME SYNC REPORT – Lets you show or hide the Report Button beside the Sync Button in the main screen. This also show or hides the individual Phone sync info status under each Phone device icon in the main screen.

PHONE TIME SYNC TOLERANCE – Fine-tunes sync tolerance of each phones. Higher values will allow longer time offset that may result in a jagged video.

RESET ALL PHONE APPS – Remotely restarts all running SpinShot Camera Apps on the android phones connected to the network.

SAVE & CLOSE – Click Save to set changes then click Close.

Facebook Sharing	OFF
Countdown Trigger Mode	AUTO
Show Phone Time Sync Report	OFF
Video Bounce	ON

Phone Time Sync Report

⚙️	🔄	🔒	📄	QUEUE: 0	SENT: 0
TABLET STATUS PHONE STATUS					
📱	📱				

4 MAIN SCREEN



A



SYNC DEVICES

Click the **SYNC** button to connect all devices to the Windows PC. Doing this will return colored status of devices. If after 5 seconds some devices are not connected, restart the devices' apps. After that, click **SYNC** button again.

B



PHONE LOCK

This lets you lock and unlock the Android phones' screens remotely.

C



PHONE TIME SYNC REPORT

This function is visible only if enabled in Advanced Settings. Clicking this gets the time sync report for each Phone device. The time sync report appears under each Phone's icon.

D

EMAIL SENDER STATUS

Shows the number of videos in queue and sent. Click on it to open the email report window for details.



E

DEVICE STATUS BAR

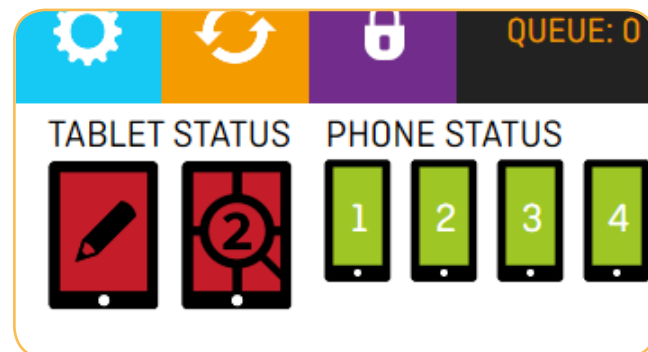
This status bar shows the status of devices being used.

GREEN – the device is connected and ready to shoot.

YELLOW – the device is busy sending images or not time-synced.

RED – the device is not connected and offline.

All devices should be **GREEN**. If not, sync again or restart phones, PC, and network.



F



GO LIVE

Opens License entry module for your SINGLE-USE or PERMANENT License Key.

G



INFO

A quick information guide to Phone and Tablet Status Codes and Buttons.

H



EXIT

Closes and Exits the SPINSHOT360 PC App.

I PREVIEW SCREEN

The 3 preview screens shows 3 sample shots taken in short intervals. This allows you to select the best-timed shots. By default, the center screen is selected. A thick pink border indicates the selected shot. Just click on any screen to select the shot.

J SHOOT / RETAKE

The button allows you to start shooting. Once it takes the shot, 3 sample shots will appear on the 3 PREVIEW SCREENS above, and the button will change to **RETAKE**. The **RETAKE** button allows you to shoot again if you are not satisfied with the sample shots.

K PROCESS

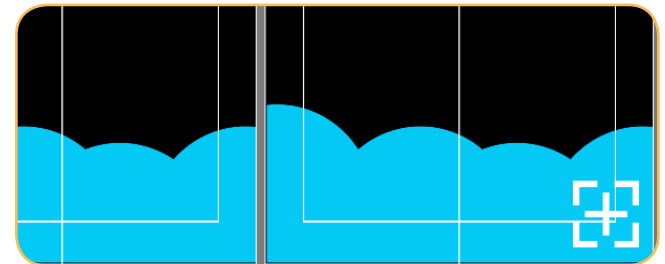
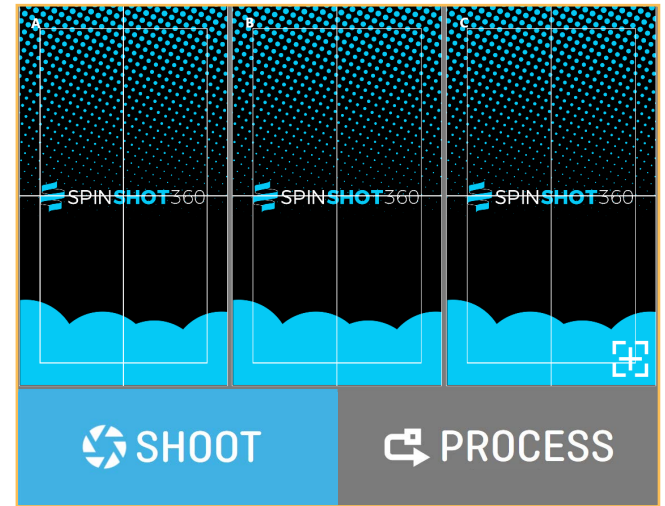
By default, this button is disabled prior to clicking the **SHOOT** button. After every **SHOOT** or **RETAKE**, this button is enabled. Click **PROCESS** to stitch all images together and convert into a video. The result will automatically appear on the Video Output screen and Sender Tablet.

L OVERLAY

The button at the lower right of the last preview screen allows you to toggle visibility of the overlay pattern on the preview screens. This is useful during aligning and testing shots.

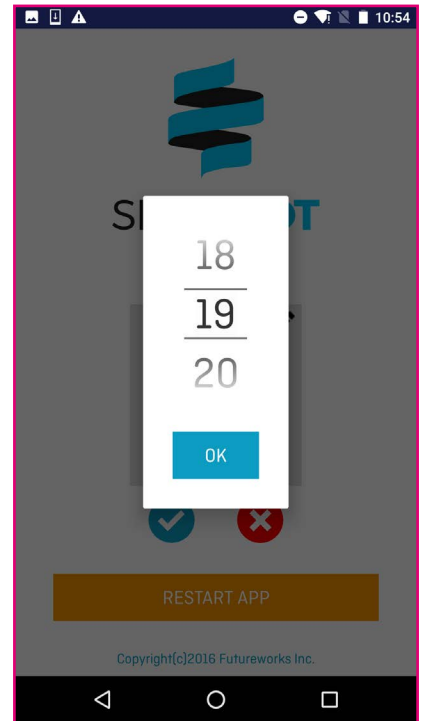
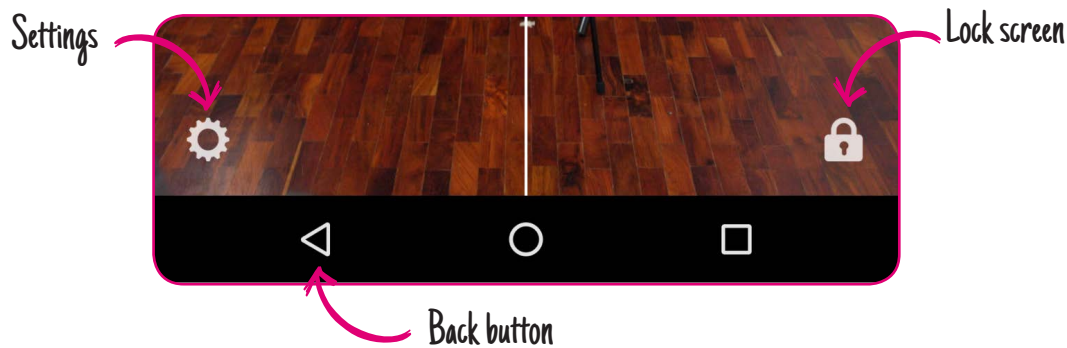
M VIDEO OUTPUT & COUNTDOWN TAB

The VIDEO OUTPUT preview screen for the video result. The preview here is mirrored on the TV Screen. COUNTDOWN tab match timing in COUNTDOWN app.



USING THE SPINSHOT360 CAMERA APP

- 1 Launch the SPINSHOT360 Camera app. Click the **SETTINGS** button to assign device numbers. Each phone should have a unique device number. Click **OK** when done. Click **BACK** button to return to preview screen.

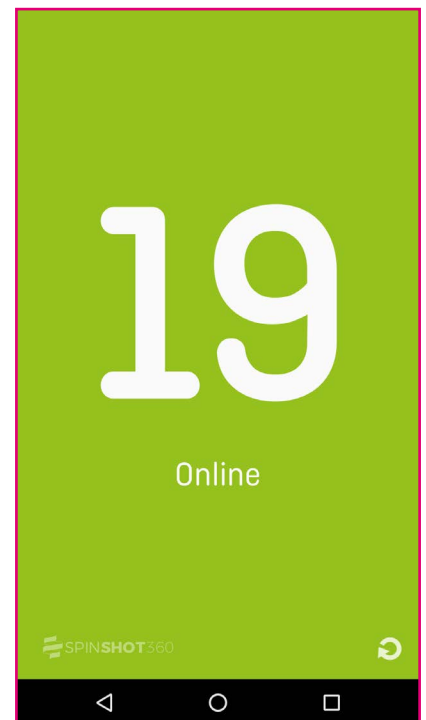
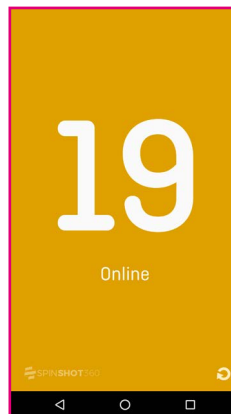


- 2 Go to the device **LOCK SCREEN** icon to see the designated device number, device color code status, and IP address. The screen color changes depending on device status. See device color codes below:

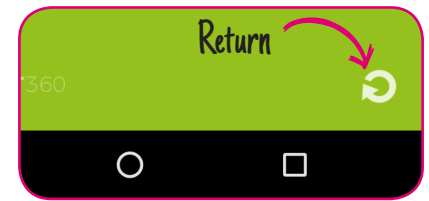
GREEN – The device is connected and ready to shoot.

YELLOW – The device is busy sending images or is not time-synced.

RED – The device is not connected and is offline. During device setup, the device color code is set to RED as default but once SPINSHOT360 time-sync is set, it will turn to **GREEN**.



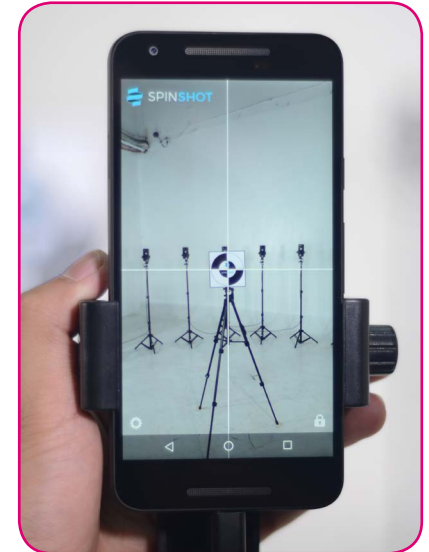
- 3 Return to the main screen by clicking anywhere on the Device Info screen once. Afterwards, a **RETURN** icon will appear on the lower right of the screen. Click on it to take you to the main screen.



- 4 The main screen is the preview screen. Next, you will align the phone to the focus board.

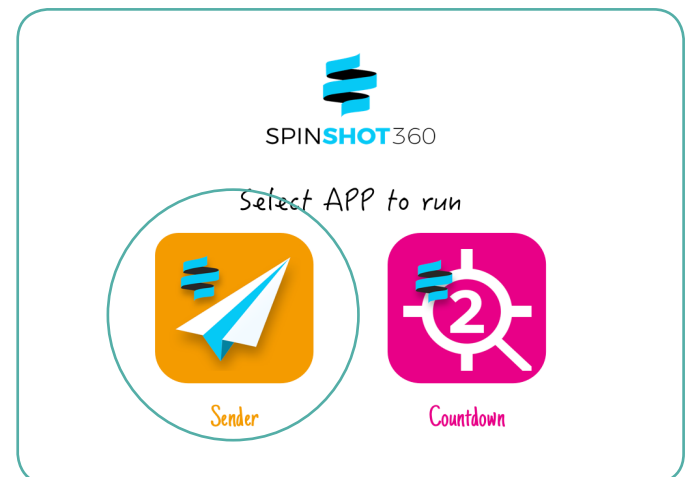
- 5 Go to the focus board you set earlier. Direct the focus board to face the phone you are aligning.

- 6 Go back to the phone to align it. The preview screen has a white cross overlay, to be used for aligning your phones' camera to the focus point. Match the cross overlay to the pattern on the focus board. Do this for all the phones.



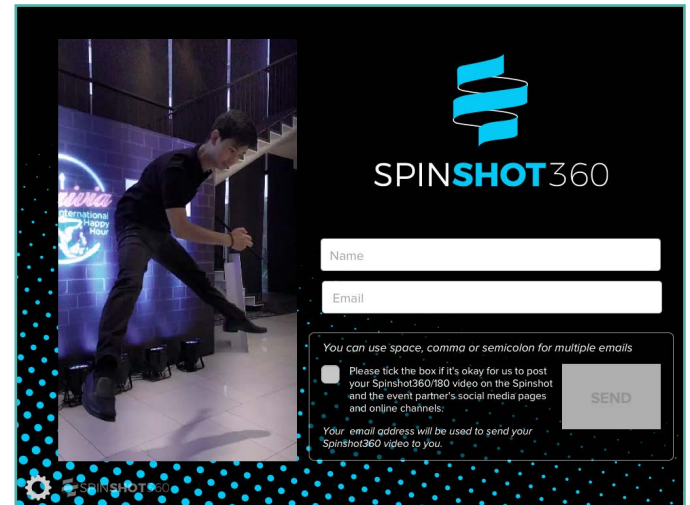
USING THE SPINSHOT360 SENDER APP

- 1 Choose **SENDER** App in the SPINSHOT360 Suite home screen. The **SENDER** App allows SPINSHOT360 to share videos to emails. Make sure the Sender device is connected to the SPINSHOT360 network and synced to the PC.



2 After finishing a shot from the Windows PC, the recent 10 video results will appear on the **SENDER** App. The video output is displayed on the left side. You may select one or more videos by clicking on the videos. A check mark appears on the upper right portion of the video.

3 Then on the right side of the **SENDER** App, you may write your name, phone number, and email address in the empty fields and click Send. The video/s will be sent to the email. Enable fields in the settings screen.



USING THE SPINSHOT360 COUNTDOWN APP

1 Choose **COUNTDOWN** App in the SPINSHOT360 Suite home screen. The **COUNTDOWN** App helps your guests follow the timing of the shot.

2 Make sure the **COUNTDOWN** device is connected to the SPINSHOT network and is synced to the PC.

3 The **COUNTDOWN** App will start instantly when the PC starts shooting. The app will prompt the guest to pose for the shot.

4 When the shot is done, the **COUNTDOWN** App resets and gets ready for the next shot.



Product Specifications

Aluminum Camera Stands

Folded Height: 390mm
Operating Height: 410 - 1075mm
Net Weight: 590g
Max Load Capacity: 2.5kg

USB Cables

USB 3.1 Type: Type A to Right-angled Type C
Length: 3m
Net Weight: 32g
Material: Nylon braid jacket with aluminum alloy shell
Voltage: 5V/3A Maximum

USB Charger

Socket Type: USB 3.1 Type A
Net Weight: 160g
Material: ABS+PC
Input Voltage: AC100-240V – 50/60Hz
Output: 8A Maximum
Energy Efficiency: Level 5 EuP, Energy Star, CEC
Certification: FCC, CE, ROHS

Phone Holder

Phone Clip Size: 58-105mm
Material: ABS+Copper+Silicone
Screw Size: 1/4"-20 Screw Standard
Net Weight: 72.5g ; Max Load Capacity: 1kg

Tablet Holder

Tablet Clip Size: 58-267mm
Material: ABS+Copper+Silicone
Screw Size: 1/4"-20 Screw Standard
Net Weight: 90g ; Max Load Capacity: 1kg

Mini-ballhead

Size: 50mm (H) x 30mm (Diameter)
Material: Metal
Screw Size: 1/4"-20 Screw Standard
Net Weight: 80g ; Max Load Capacity: 2kg

Mini Panorama Head

Size: 53mm (Diameter)
Material: Aluminum Alloy
Screw Size: 3/8" or 1/4"-20 Screw Standard
Net Weight: 110g ; Max Load Capacity: 1.5kg

User Safety Information

This document only covers items included in the SPINSHOT360 Kit. For devices, such as but not limited to mobiles phones, computer/laptop, WIFI routers, pocket WIFI devices, tablets, TV screens, and video lights, that are purchased or acquired separately from the SPINSHOT360 Kit, please read carefully each item's user manual for safe operations.



Keep out of reach of children.



Do not exceed the weight load capacity that this product is rated for.



Always ensure that locks and devices are safety secured to avoid accidental damage to the devices and other equipment.



Do not use this product at temperatures less than -20C or more than +60C (-4F to +140F). Not recommended to use in seawater.



Avoid leaving the product and components in high temperature areas for long periods of time.



Remove the devices and other components from the phone stands and keep them safe in the hard case during transportation.



Clean with damp cloth to remove dirt, dust or sand from leg locks and threads of aluminum phone stands and other non-electronic components. Do not use any kind of liquid to clean electronic devices such as the USB chargers and cables. Use dry soft cloth instead.



For your own safety, do not place this product and its components near any electrical power sources and/or chemical substances.

Legal notice

Copyright© Futureworks International Limited 2017. All rights reserved.

SPINSHOT360 is protected by copyright law and international treaties. The software is licensed (not sold), and its use is subject to a License Agreement. Unauthorized use, copying or distribution of the program or any of its components may result in severe criminal or civil penalties, and will be prosecuted to the maximum extent under the law.

Trademarks and Permissions

SPINSHOT360, (SPINSHOT360 device), FUTUREWORKS! and (Futureworks! device) are trademarks or registered trademarks of Futureworks International Limited.

All other trademarks and registered trademarks used in this documentation are property of their owners:

Microsoft, Windows, and Windows 10 Home are trademarks or registered trademarks of Microsoft Corporation.

Apple ID, Apple iPad, iOS, and Apple App Store are trademarks or registered trademarks of Apple Inc.

Android, Android Kitkat, Google and Google Playstore are registered trademarks by Google, Inc.

Keylok is a registered trademark by Microcomputer Applications Inc.

Limited Warranty Statement

The warranty obligations of Futureworks International Limited are limited to the terms set forth below:

Items Covered

Futureworks International Limited warrants that the following items are free from defects in materials and/or workmanship:

- a. USB Keylok – for a period of one (1) year*
 - b. Aluminum camera stands, phone holders, tablet holders, mini-ballheads, mini-panorama head – for a period of six (6) months*
 - c. USB chargers, USB cables – for a period of six (6) months*
- *from the date of purchase by the customer (not transferable) under normal use.

Items Not Covered

This warranty does not cover any product that is not part of purchase of the product package or kit but is mentioned in product documentations for the purpose of instruction and/or use of the product, such as but not limited to:

- a. Mobile phones or cameras
- b. Personal computer or laptop devices
- c. Tablet devices
- d. Wifi routers and network devices
- e. TV screens
- f. Video lights

Who is Covered

The warranty extends only to first purchaser/owner and is not assignable or transferable to any subsequent purchaser/owner.

Limitation of the Coverage

The warranty does not cover damage, deterioration, or malfunction resulting from:

- a. Normal wear and tear of the equipment;
- b. Scratches and damages to all surfaces and external parts due to normal customer use;
- c. Improper or unreasonable use or maintenance of the equipment;
- d. Unauthorized disassembly, repair, alteration or modification;
- e. Misuse, abuse, negligence or accident;
- f. Spillage of food, liquid, corrosion, rust or use of wrong voltage;
- g. Lightning, accident, war, fire, typhoon, flood, earthquake and other causes of nature; and
- h. Connection to device/s not fit for use with the product.

This warranty does not also cover any damage, deterioration or malfunction resulting from any exposure to excess moisture, fire, improper packing and shipping (such claims must be presented to the carrier), power surges, or any other cause which does not relate directly to a defect in materials and/or workmanship of the items covered by this warranty.

What Futureworks International Limited Will Do

- a. During the warranty period, Futureworks International Limited will repair or replace the covered items or its components found to be defective. The purchaser/owner of the product shall not be charged for such repair or replacement within the warranty period. All replaced items, as well as the parts and/or components thereof, shall become the property of Futureworks International limited.
- b. All costs incurred, which are related and/or incidental to such repair or replacement (such as spare parts cost, maintenance cost, delivery, etc.) shall be borne by the purchaser/owner.
- c. The warranty in respect of the repaired or replaced items shall continue until the expiration of the remaining warranty period or sixty (60) days from the date of the completion of the repair or issuance of the replacement, whichever is longer.
- d. As a condition for the repair or replacement of the covered items, the purchaser/owner shall be required to provide proof of purchase, as well as other document or information that shows the date and place thereof.
- e. The purchaser/owner must backup his data before having the covered item/s repaired or replaced by Futureworks International Limited. Futureworks International Limited will not be liable for the damage or loss of any of the purchaser/owner's data or programs.
- f. If the covered item/part is returned to Futureworks International Limited, for repair or replacement, after the expiration of the warranty period, normal service policies shall apply and the purchaser/owner will be charged accordingly.

What Will Nullify the Coverage

This warranty will be rendered null and void in any of the following events, whether caused by the owner/purchaser or otherwise:

- a. Unauthorized unlocking of software and hardware;
- b. Unauthorized software upgrade; and
- c. Alteration or modification of any term contained in this warranty has been made without prior written consent from Futureworks International Limited.

Limitation of Liability

Except for the expressed warranties set forth above, Futureworks International Limited grants no other warranties, expressed or implied.

TO THE MAXIMUM EXTENT PERMITTED BY LAW, FUTUREWORKS INTERNATIONAL LIMITED IS NOT RESPONSIBLE FOR DIRECT, SPECIAL, INCIDENTAL OR CONSEQUENTIAL DAMAGES RESULTING FROM ANY BREACH OF WARRANTY OR CONDITION, OR UNDER ANY OTHER LEGAL THEORY.

Changes in Warranty Information, Product Feature, and Specifications

All warranty information, product feature and specifications are subject to change without prior notice.

FUTUREWRKS!

Futureworks International Limited
502 Golden Gate Commercial Building,
136-138 Austin Road, Kowloon, Hong Kong



SPIN**SHOT**360

360° PHOTO BOOTH

www.SPINSHOT360.com